

50,000-Count Digital Multimeter Models MX53^{III}, MX54^{III}, MX55^{III} & MX56^{III}



The Models MX53, MX54, MX55 and MX 56 are hand-held professional digital multimeters that measure up to the toughest standards. They are built into a rugged housing which provides a separate battery and fuse compartment to isolate the DMM's electronics from contamination. These meters offer a complete set of measurement ranges and are in compliance with international safety and quality standards to ensure a professional and reliable measuring tool.

These True RMS (AC or AC + DC) meters provide accurate measurements of non-sinusoidal waveforms.

They all measure AC Amps, AC Volts, DC Amps, DC Volts, Resistance, Continuity, Capacitance, Frequency and have a Diode Test function. AC Voltage measurement can be displayed in Volts, in dB or in resistance power. Once the load impedance has been programmed the multimeter automatically calculates the value in dB and the power consumed (VA).

The large and easy-to read LCD features a selectable 50,000-count digital display. The display features comprehensive user interface symbols, such as low battery,

Min/Max/Avg and a 34-segment analog bargraph for easy trend readings. Accuracy is 0.025%. All models are equipped with a Data Hold function that freezes the measurement for later viewing. All models are waterproof, IP67 rated as well as CE marked.

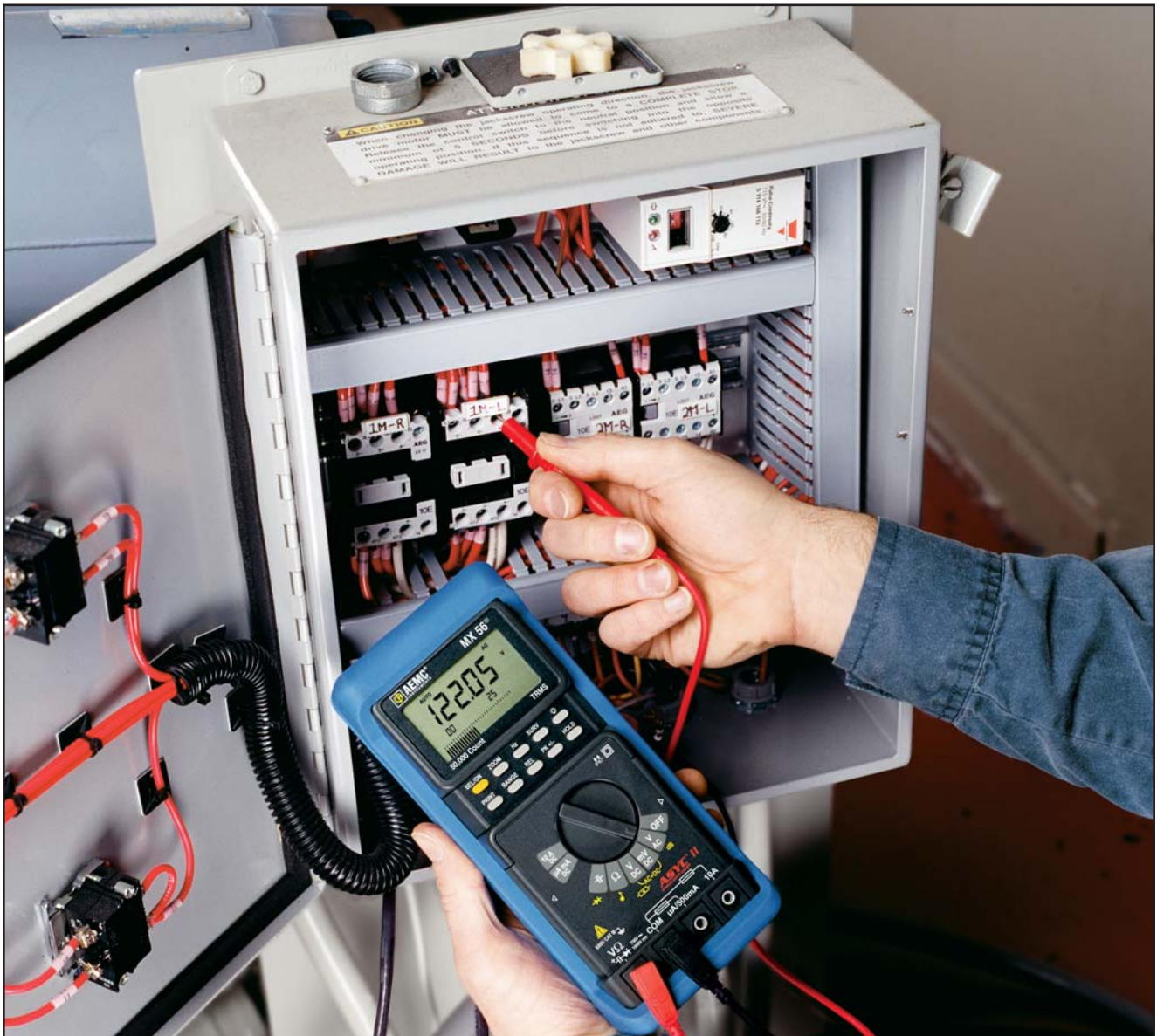
All models include a pair of test leads (red/black), 9V Alkaline battery and a user manual.

Features

- 50,000-count selectable
- Accuracy to 0.025%
- 600VAC/DC volts measurements
- True RMS (AC or AC + DC)
- Selectable to 1G Ω on the 500mV range
- EN 61010, 600V, Cat. III and 1000V, Cat. II
- IP67 rated
- RS-232 communication available
- Includes rubber holster

Applications

- Installation, repair or maintenance of industrial equipment
- Design verification of prototypes/production units
- Troubleshooting failures and poor performance
- Quality analysis



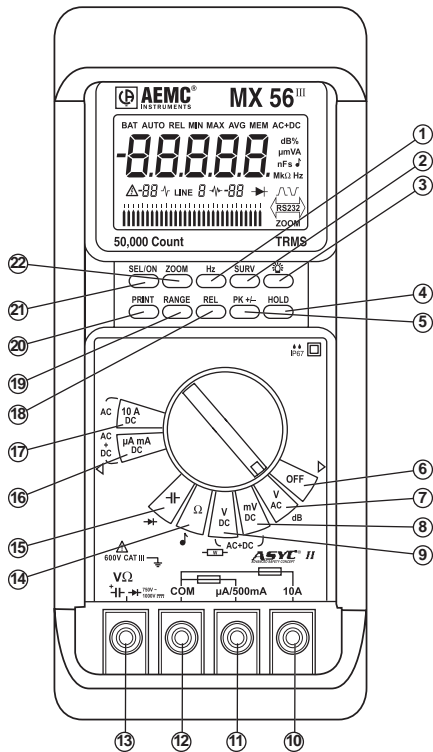
Model MX56^{III} measuring DC voltages in a signal control panel.

Specifications

MODELS	MX53™	MX54™	MX55™	MX56™
DC VOLTAGE				
Measurement Range	0.5 to 1000V	0.5 to 1000V	0.5 to 1000V	0.5 to 1000V
Resolution	10 μ V to 100mV	10 μ V to 100mV	10 μ V to 100mV	10 μ V to 100mV
Basic Accuracy ⁽¹⁾	$\pm 0.1\%$ of Reading ± 2 cts	$\pm 0.05\%$ of Reading ± 2 cts	$\pm 0.025\%$ of Reading ± 2 cts	$\pm 0.025\%$ of Reading ± 2 cts
Input Impedance	10M Ω	10M Ω	10M Ω	10M Ω
AC VOLTAGE				
Measurement Range	0.5 to 750V	0.5 to 750V	0.5 to 750V	0.5 to 750V
Resolution	100 μ V to 1V	10 μ V to 100mV	10 μ V to 100mV	10 μ V to 100mV
Basic Accuracy ⁽¹⁾	$\pm 2\%$ of Reading ± 3 cts	$\pm 2\%$ of Reading ± 30 cts	$\pm 2\%$ of Reading ± 30 cts	$\pm 2\%$ of Reading ± 30 cts
Input Impedance	10M Ω	10M Ω	10M Ω	10M Ω
DC CURRENT				
Measurement Range	5mA to 10A	500 μ A to 10A	500 μ A to 10A	500 μ A to 10A
Resolution	100nA to 1mA	10nA to 1mA	10nA to 1mA	10nA to 1mA
Basic Accuracy ⁽¹⁾	$\pm 0.2\%$ of Reading ± 2 cts	$\pm 0.05\%$ of Reading ± 2 cts	$\pm 0.05\%$ of Reading ± 2 cts	$\pm 0.05\%$ of Reading ± 2 cts
AC CURRENT				
Measurement Range	5mA to 10A	500 μ A to 10A	500 μ A to 10A	500 μ A to 10A
Resolution	1 μ A to 10mA	10nA to 1mA	10nA to 1mA	10nA to 1mA
Basic Accuracy ⁽¹⁾	$\pm 1\%$ of Reading ± 3 cts	$\pm 0.6\%$ of Reading ± 30 cts	$\pm 0.6\%$ of Reading ± 30 cts	$\pm 0.6\%$ of Reading ± 30 cts
RESISTANCE				
Measurement Range	500 Ω to 50M Ω	500 Ω to 50M Ω	500 Ω to 50M Ω	500 Ω to 50M Ω
Resolution	10m Ω to 1k Ω	10m Ω to 1k Ω	10m Ω to 1k Ω	10m Ω to 1k Ω
Basic Accuracy ⁽¹⁾	$\pm 0.1\%$ of Reading ± 3 cts	$\pm 0.07\%$ of Reading ± 2 cts	$\pm 0.07\%$ of Reading ± 2 cts	$\pm 0.07\%$ of Reading ± 2 cts
CONTINUITY				
Measurement Range	10 Ω to 20 Ω	10 Ω to 20 Ω	10 Ω to 20 Ω	10 Ω to 20 Ω
Response Time	1ms	1ms	1ms	1ms
DIODE				
Resolution	1mV	1mV	1mV	1mV
Test Current	1mA $\pm 20\%$	1mA $\pm 20\%$	1mA $\pm 20\%$	1mA $\pm 20\%$
CAPACITANCE				
Measurement Range	50nF to 50mF	50nF to 50mF	50nF to 50mF	50nF to 50mF
Resolution	10pF to 10 μ F	10pF to 10 μ F	10pF to 10 μ F	10pF to 10 μ F
Basic Accuracy ⁽¹⁾	$\pm 1\%$ of Reading ± 2 cts	$\pm 1\%$ of Reading ± 2 cts	$\pm 1\%$ of Reading ± 2 cts	$\pm 1\%$ of Reading ± 2 cts
FREQUENCY				
Measurement Range	0.62Hz to 500kHz	0.62Hz to 500kHz	0.62Hz to 500kHz	0.62Hz to 500kHz
Basic Accuracy ⁽¹⁾	0.03% of Reading	0.03% of Reading	0.03% of Reading	0.03% of Reading
dB FUNCTION				
Measurement Range	–	10mV _{AC} to 750V _{AC}	10mV _{AC} to 750V _{AC}	10mV _{AC} to 750V _{AC}
Resolution	–	0.01dB	0.01dB	0.01dB
GENERAL				
Digital Display	50,000-count			
Analog Bargraph	34-segment			
Power Source	9V Alkaline battery			
Dimensions	7.4 x 3.2 x 1.5" (189 x 82 40mm)			
Weight	0.8 lb (400g)			
ENVIRONMENTAL				
Operating Temperature	14° to 140°F (-10° to 60°C)			
Storage Temperature	-40° to 158°F (-40° to 70°C)			
SAFETY				
Safety Rating	EN 61010			
CE Mark	Yes			

(1) Accuracy dependent on range

Construction



1. Time functions selection
2. Monitoring values selection/display
3. Display backlighting
4. Display hold
5. Peak measurement
6. Power off
7. AC voltage measurement
8. 500mV voltage measurement
9. DC voltage measurement
10. Input terminal range 10A
11. Input terminal range μ A, mA
12. Multimeter reference input
13. Input terminal, ranges 11, 12, 13, 14 and 15
14. Resistance measurement
15. Capacitance measurement
16. Current measurement up to 500mA
17. Current measurement up to 10A (Model MX56^{III})
18. Relative mode measurement (Model MX56^{III})
19. Range change
20. Data sending to a printer
21. Power on (selects secondary functions)
22. Bargraph scale magnification



Test Leads included with MX50 Series

ORDERING INFORMATION	CATALOG NO.
DMM Model MX53 ^{III} (50,000-count, TRMS, 0.1% Accuracy, with Holster)	Cat. #2116.69
DMM Model MX54 ^{III} (50,000-count, TRMS, 0.05% Accuracy, with Holster)	Cat. #2116.70
DMM Model MX55 ^{III} (50,000-count, TRMS, 0.025% Accuracy, with Holster)	Cat. #2116.71
DMM Model MX56 ^{III} (50,000-count, TRMS, 0.025% Accuracy, with Holster)	Cat. #2116.72

Contact Us

United States & Canada:

Chauvin Arnoux®, Inc.
d.b.a. AEMC® Instruments
200 Foxborough Blvd.
Foxborough, MA 02035 USA
(508) 698-2115 • Fax (508) 698-2118
www.aemc.com

Customer Support – for placing an order, obtaining price & delivery:
customerservice@aemc.com

Sales Department – for general sales information:
sales@aemc.com

Repair and Calibration Service – for information on repair & calibration, obtaining a user manual:
repair@aemc.com

Technical and Product Application Support – for technical and application support:
techinfo@aemc.com

Webmaster – for information regarding www.aemc.com:
webmaster@aemc.com

South America, Central America, Mexico, Caribbean, Australia & New Zealand:

Chauvin Arnoux®, Inc.
d.b.a. AEMC® Instruments
15 Faraday Drive
Dover, NH 03820 USA
(978) 526-7667 • Fax (978) 526-7605
export@aemc.com
www.aemc.com

All other countries:

Chauvin Arnoux SCA
190, rue Championnet
75876 Paris Cedex 18, France
33 1 44 85 45 28 • Fax 33 1 46 27 73 89
info@chauvin-arnoux.com
www.chauvin-arnoux.com