



# EMCAT PRO 2005™ Software

New Windows\* Based Motor Circuit Analysis Software for Predictive Maintenance, Troubleshooting and Condition Monitoring Of Electric Motors, Generators and Transformers

EMCAT PRO 2005 software provides total Off-Line Motor System Maintenance and Management for your organization. The software integrates seamlessly with the ALL-TEST IV Pro 2000 Motor Circuit Analyzer and data collector to create a complete PdM tool incorporating route, work order management and extensive diagnostics.

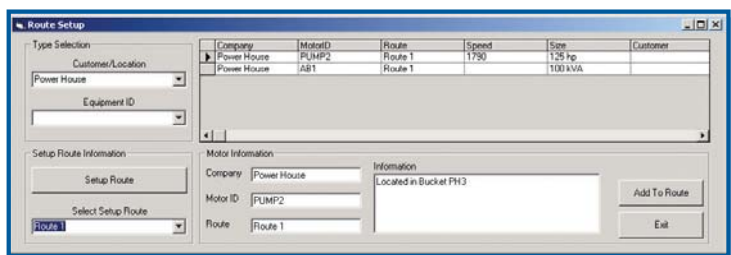
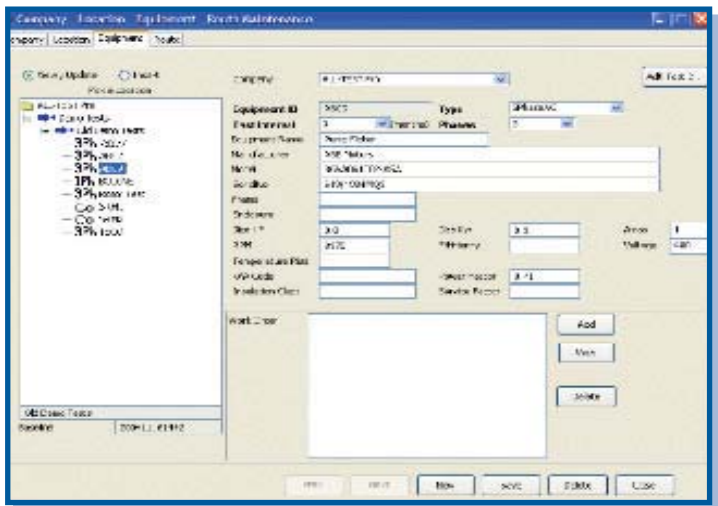
The software is based on input from our industrial users and service organizations, and is a powerful tool for tracking, scheduling and maintaining records of AC/DC electric motors and transformers. It provides an easy to use Motor Maintenance and Management System for your organization whether you are a service company or an in-house maintenance department. EMCAT PRO 2005 integrates seamlessly with the ALL-TEST IV Pro 2000 Motor Circuit Analyzer and data collector to create a complete PdM tool incorporating route, work order management and extensive diagnostics.

EMCAT PRO 2005 is a completely new program that runs on Windows XP\*, or later, operating systems. It is available as a single operator or Enterprise version for multi-users.

## Comprehensive Database

At the heart of EMCAT is a database where you collect and organize nameplate information from all of your motors and transformers. For a manufacturing site, records can be grouped by building and/or process. For a service organization, records can be grouped by customer name and location. It is designed to readily support both in house and contract service organizations. EMCAT PRO 2005 has the fields and flexibility you need to clearly identify any motor, device or customer.

TREND 2003 or EMCAT data can be easily exported to the new software with a few clicks on your mouse.



## Route Management and Maintenance Scheduling

For predictive maintenance and condition monitoring, EMCAT PRO 2005 lets you create "routes" of devices for scheduled testing. Work orders can be printed, and motor data can be downloaded to the ALL-TEST IV Pro 2000.

\*Windows and Windows XP are trademarks of Microsoft Corporation.

## Diagnostics and Trending

Built-in diagnostic algorithms take the guesswork out of interpreting test results. Separate profiles are provided for AC motors, DC motors and Transformers. Evaluation of rotor test data is also built in; a unique Rotor Grading System (RGS) gives a diagnosis and "grades" the rotor. All measurements, including rotor grades, can be trended for predictive maintenance.

## Collect all your Data in One Program

EMCAT provides fields to record test data from other PdM technologies including Vibration, IR, Current Signature, P.I., Ultrasound, and High Potential test results. Evaluate all aspects of machine health from within a single program!

## Extensive and Flexible Reporting

Standard reports include:

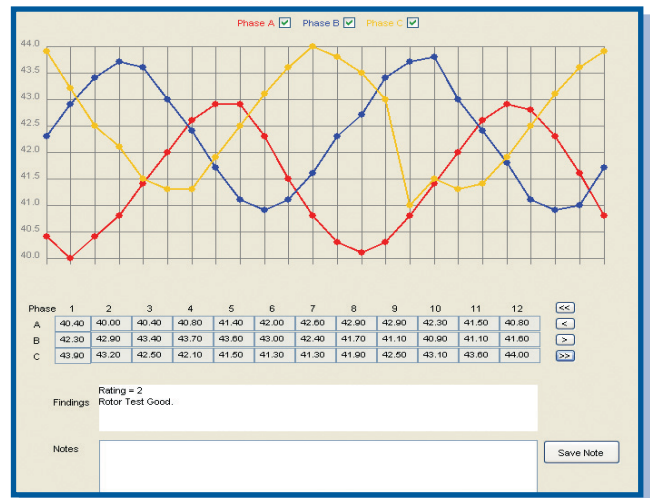
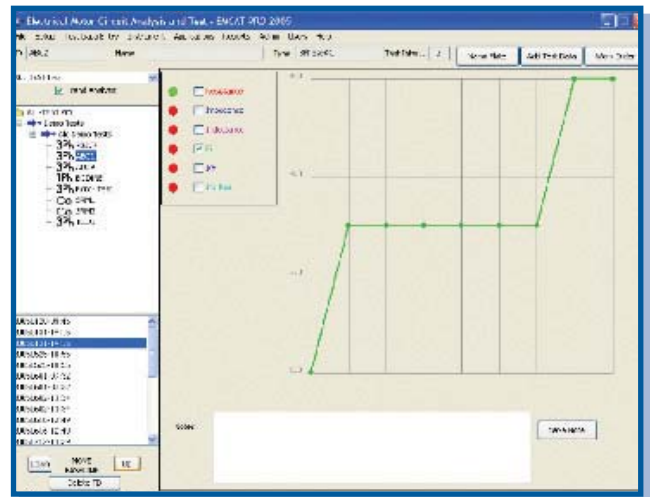
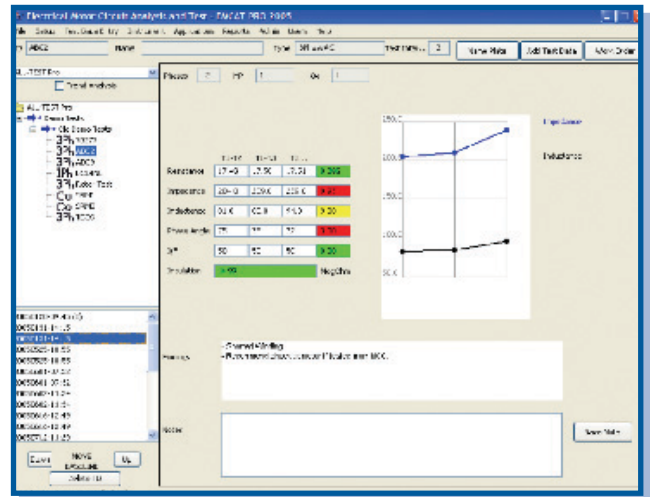
- Detailed test reports and trend reports for individual devices
- List of equipment to be reviewed as indicated by previous tests
- Past-due maintenance items

## Interface with Your CMMS

You may already have a CMMS that handles scheduling and work orders. We've incorporated a module within EMCAT PRO 2005 that allows data to be shared. We can also customize the program to integrate with your in-house system. Contact the factory for details.

## System Requirements

- Pentium computer or equivalent running Windows XP™ or later versions.
- 256 MB RAM, minimum 10 MB available hard disk space
- 15" screen for laptop; 17" screen for PC.
- 1024 X 768 minimum screen resolution.
- RS-232 port or adaptor for uploading and downloading.
- USB port for security device. Microsoft Office 2003™ with word JavaRuntime Environment™ 1.4 or higher. Can be downloaded from the CD.



Learn more about how **EMCAT PRO 2005** can help you improve your plant performance. Email us at [info@alltestpro.com](mailto:info@alltestpro.com) for a quotation to upgrade or purchase new. We will also be happy to send you a demo disk or arrange for a free demonstration over the web.

### ALL-TEST Pro – A Division of BJM Corp

123 Spencer Plain Rd.

Old Saybrook, CT 06475

Tel 800-952-8776

860-395-2988

Fax 860-399-3180

Web [www.alltestpro.com](http://www.alltestpro.com)

Represented by: